

Reliably serving your cooling process ...

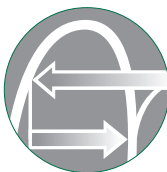


Quiet and proven
technology for year-
round reliable operation

VXI

Closed Circuit
Cooling Towers

- ✓ Reliable
- ✓ Compact
- ✓ Quiet
- ✓ Low installed cost



**BALTIMORE
AIRCOIL COMPANY**

... because temperature matters™

VXI

Closed Circuit Cooling Towers

Baltimore Aircoil is a worldwide leading manufacturer of heat rejection equipment for a wide range of applications. In its constant search for improvement in design and performance BAC has developed and perfected many features which have become the standard of excellence for cooling throughout the world.

VXI closed circuit cooling towers use centrifugal fans with low sound emission and guarantee reliable and superb thermal performance. VXI towers are compact for easy shipment and installation in confined spaces.

Single cell capacity : up to 2615 kW



Drift eliminators

certified by Eurovent, for minimum drift loss, in modules for easy maintenance

Heavy duty construction

hot-dip galvanized steel panels with Baltiplus or Baltibond* hybrid coating

Water distribution system

spray branches with non-clog nozzles

Heat exchange coil

hot-dip galvanized after fabrication, designed for maximum 10 bar operation pressure according to PED.

Cold water basin

with strainer and make-up

Centrifugal fan

Quiet, forward-curved

Spray pump

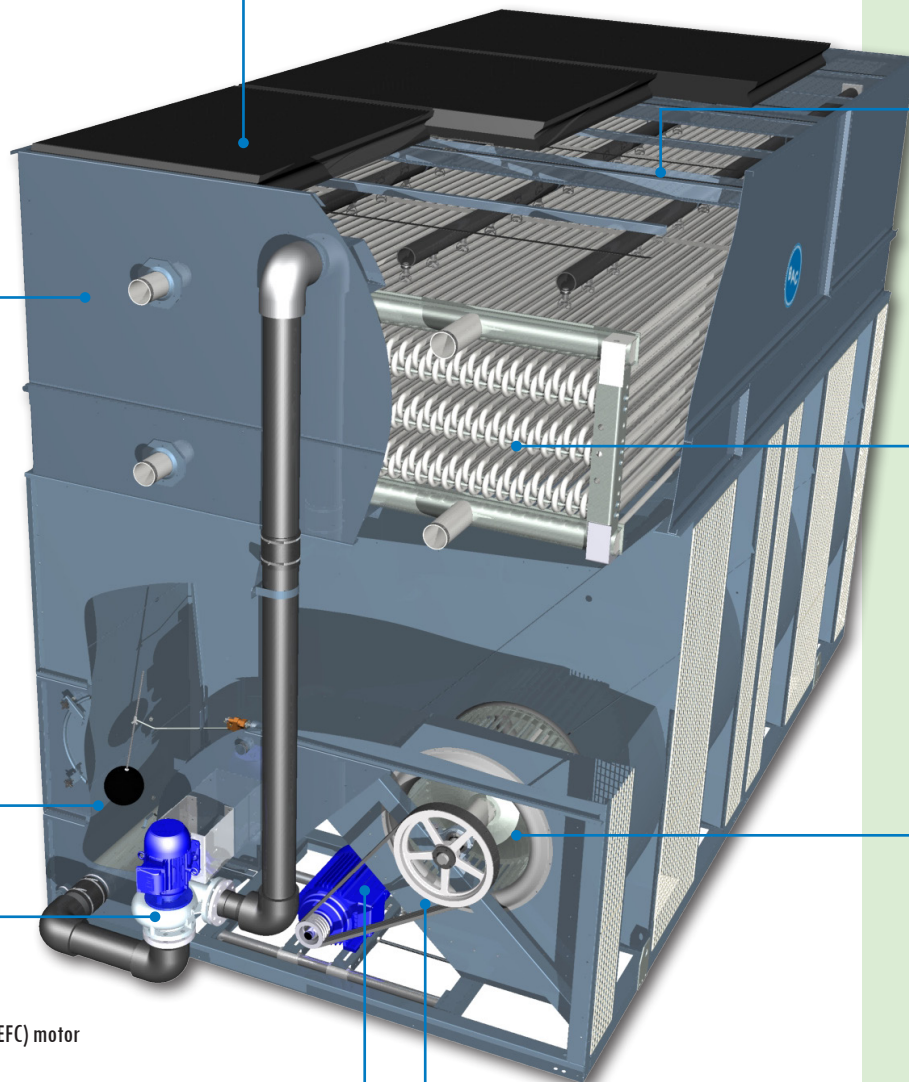
Close coupled, bronze fitted centrifugal spray pump with totally enclosed fan cooled (TEFC) motor

Fan motor

low kW, 4-pole motor

Fan drive system

heavy-duty bearings and aluminium sheaves



... because temperature matters™



LOW ENVIRONMENTAL
IMPACT PRODUCT



green tower

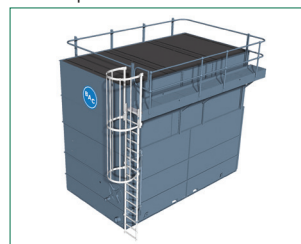
Energy efficient

Evaporative cooling equipment can minimize the energy consumption of the process to be cooled.

Ultra quiet design

VXI closed circuit cooling towers use fans with low sound emissions as standard. They have a single-side air inlet, and a quieter tower rear for more noise-sensitive areas. For extremely sound sensitive applications, sound attenuators* are available.

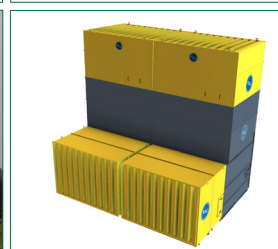
Ladder and platform*



Baltiguard drive system*



Easily accessible fan drive system at ground level



Intake and discharge attenuator*

year-round reliable operation

VXI uses **high quality components**, meeting very strict technical specifications for operation in the most demanding conditions.

Since 1978, thousands of VXI closed circuit cooling towers have been globally installed, proving the VXI cooling tower reliability.

Fans, motor and drive system (V-belt) are located at ground level, in the dry air, preventing moisture and condensation. No external moving parts, helping it withstand the toughest weather.

Upgrade your condenser operational flexibility with :

- **Baltiguard drive system*** to operate as a dual-speed motor, but with standby reserve capacity to cope with any failure.
- **Electrical basin heaters*** to protect the water in the basin against freezing, when the condenser is idle.
- **Electric water level control*** for precise control of the water level with no need for seasonal adjustment.

Compact

- Compact design for confined spaces
- **Single-side air inlet** for installation next to solid walls
- **Indoor installation** possible thanks to centrifugal fans allowing intake or discharge ductwork.

low installed cost

- **Easy on-site assembly** of factory-built sections to reduce shipping and installation costs.
- Single fan side requiring **fewer motor starters** to install and wire.
- High capacity and minimal operating weight. **Save on steel supports**, both underneath the equipment and in the building itself for rooftop installations.
- VXI-C models can be **container-shipped** (in 10' containers). Fan enclosures shippable loose in the condenser bottom section for easy on-site assembly.

long service life

VXI closed circuit cooling towers offer a broad choice of **construction materials**, ranging from galvanized steel (Baltiplus) to the proven Baltibond* hybrid coating and stainless steel* (AISI 304 or 316).

The coil is constructed of continuous length of prime surface steel, hot-dip galvanized after fabrication. Tubes are sloped for free drainage of fluid. Designed for maximum 10 bar operating pressure according to PED.

Optionally available are extended surface coils with selected rows, finned at 3 to 5 fins per inch and hot-dip galvanized after fabrication, for dry operation during winter time. Optional stainless steel coils in type 304L or 316L.



Easy installation



Full access to spray distribution system



BALTIMORE
AIRCOIL COMPANY

BALTIMORE AIRCOIL COMPANY

more than 75 years of experience and know-how

With thousands of successfully operating installations worldwide Baltimore Aircoil has the **application and system experience** to assist you in the design, installation and operation of your cooling equipment. Ongoing investment in research, combined with an advanced **R&D** laboratory facility, enables BAC to consistently offer new technologies and products to meet developing industry demands.

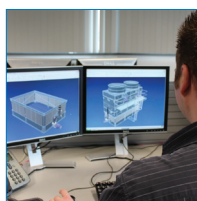
Baltimore Aircoil has a **network of highly qualified sales representatives** backed up by an experienced technical staff to ensure that each customer project is a success.

Sustainability is fostered and cultivated in BAC's business processes. Through our products we also help our customers to achieve their sustainability goals. You can find BAC's sustainability commitments on the website www.BacSustainability.com

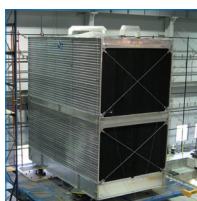
ISO 9001:2008
certified



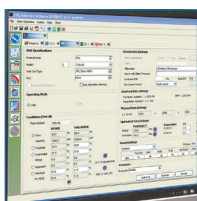
PED 97/23/EC
23 Bar standard design pressure
34 Bar test pressure



3D-design software



5000 m² R&D-test centre



selection and simulation software



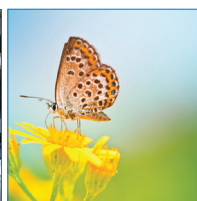
testing



high quality and sustainable
manufacturing



on site services



sustainable business processes
and culture

There is a wide variety of closed circuit cooling tower concepts available on the market. For this reason BAC recommends to evaluate different cooling tower configurations for your project. Your BAC Balticare representative is available to assist you in this evaluation.

In order to select the right closed circuit cooling tower for a specific application, a number of important parameters should be considered. Listed below are questions, which should be answered when making your choice.

about the application

- ☐ What are the design conditions (flow, fluid type, in and out and entering wet bulb temperature) which achieve the best energy efficiency for my process?
- ☐ Are there acoustical limitations (sound power, sound pressure, day, night)?
- ☐ What space is available for the closed circuit cooling tower?
- ☐ How can I conduct maintenance and cleaning?
- ☐ Could the formation of visible plume represent a problem?
- ☐ What is the condition of the make-up water and how to control the recirculating water quality?

about the supplier

- ☐ How has the manufacturer established his ratings?
- ☐ What is the level of the manufacturer's service and access to original spare parts?
- ☐ Can the manufacturer demonstrate compliance with directives and regulations?
- ☐ Who is my contact person for technical and commercial assistance?
- ☐ Are the manufacturers products produced in a sustainable way?

For more information visit our website at www.BaltimoreAircoil.eu or contact your BAC representative to assist you with the selection, operation and maintenance of your cooling tower installation, to ensure continuous efficiency of your process.



www.BaltimoreAircoil.eu

www.BacSustainability.com

info@BaltimoreAircoil.eu



**BALTIMORE
AIRCOIL COMPANY**

Your local contact :

... because temperature matters™